

# BEFARD XJ TRAILER CRANE



# BEFARD XJ TRAILER CRANE

The BEFARD XJ TRAILER CRANE is a modern solution ideal for the industry window and construction. Complete with a suction cup of the XP series, it allows for assembly heavy glazing, and with the use of webbing slings, handling and feeding heavy loads. BEFARD XJ is made of certified S700 MC steel (Swedish STRENX / WELDOX, German SALZGITTER).



The device is completely independent and independent. It has its own powered by an internal combustion engine. Depending on the specific configuration The cranes on the trailer can have various ranges, even up to 18 meters. The parameters of the trailer may differ from those given in the catalog.

# BEFARD XJ TRAILER CRANE

## CRANE ON A TRAILER XJ 34

### CRANE PARAMETERS XJ 34

- registered for full capacity,
- maximum capacity 2300 kg,
- three hydraulic extensions and two manual extensions with a total vertical reach of approx.9.5 m and 7.35 m horizontally,
- column rotation
- extension equipped with textolite slides,
- internal combustion engine - VANGUARD engine (electric start),
- radio control of the crane,
- a vehicle of category O2,
- number of axles and wheels 2/4
- length 4400 mm
- width 2020 mm
- four supports lowered hydraulically, after initial unfolding by hand

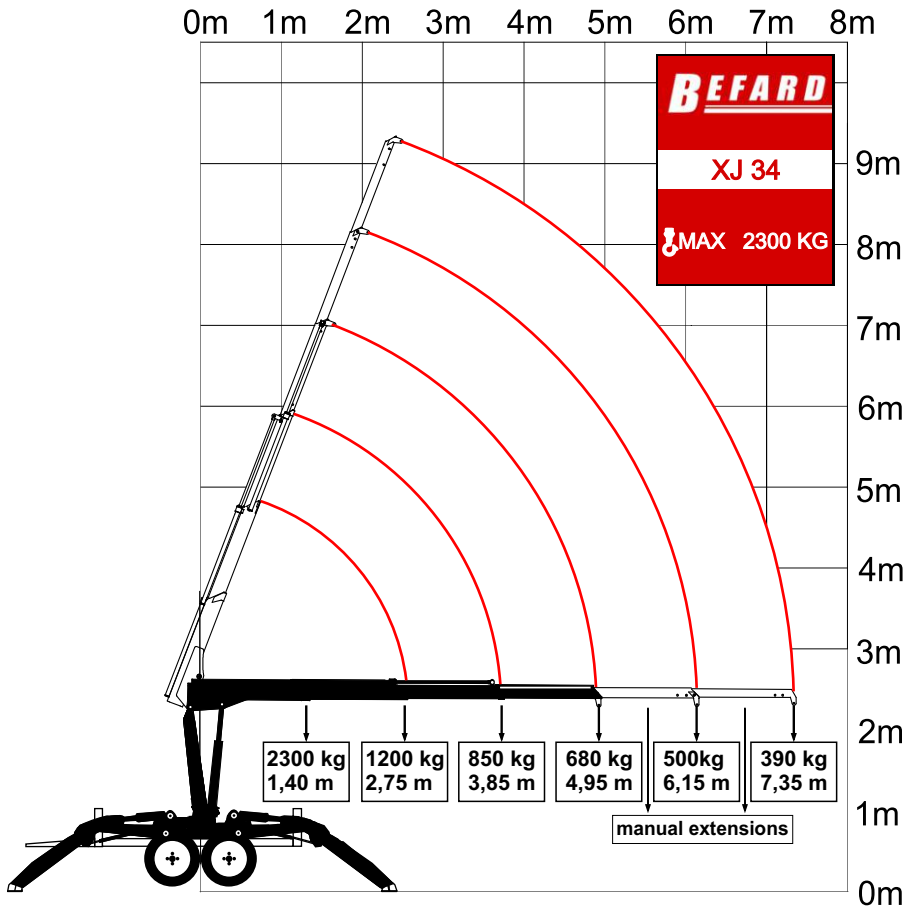


remote control

The dimensions of the trailer may differ from those given in the catalog.

# BEFARD XJ TRAILER CRANE

CRANE ON A TRAILER XJ 34



# BEFARD XJ TRAILER CRANE

## CRANE ON A TRAILER XJ 36

### CRANE PARAMETERS XJ 36

- registered for full capacity,
- maximum capacity 1600 kg,
- four hydraulic extensions of 9.6 m horizontally and almost 12 m vertically
- column rotation
- extension equipped with textolite slides,
- internal combustion engine - VANGUARD engine (electric start),
- radio control of the crane,
- a vehicle of category O2,
- number of axles and wheels 2/4
- length 4400 mm
- width 2020 mm
- four supports lowered hydraulically, after initial unfolding by hand



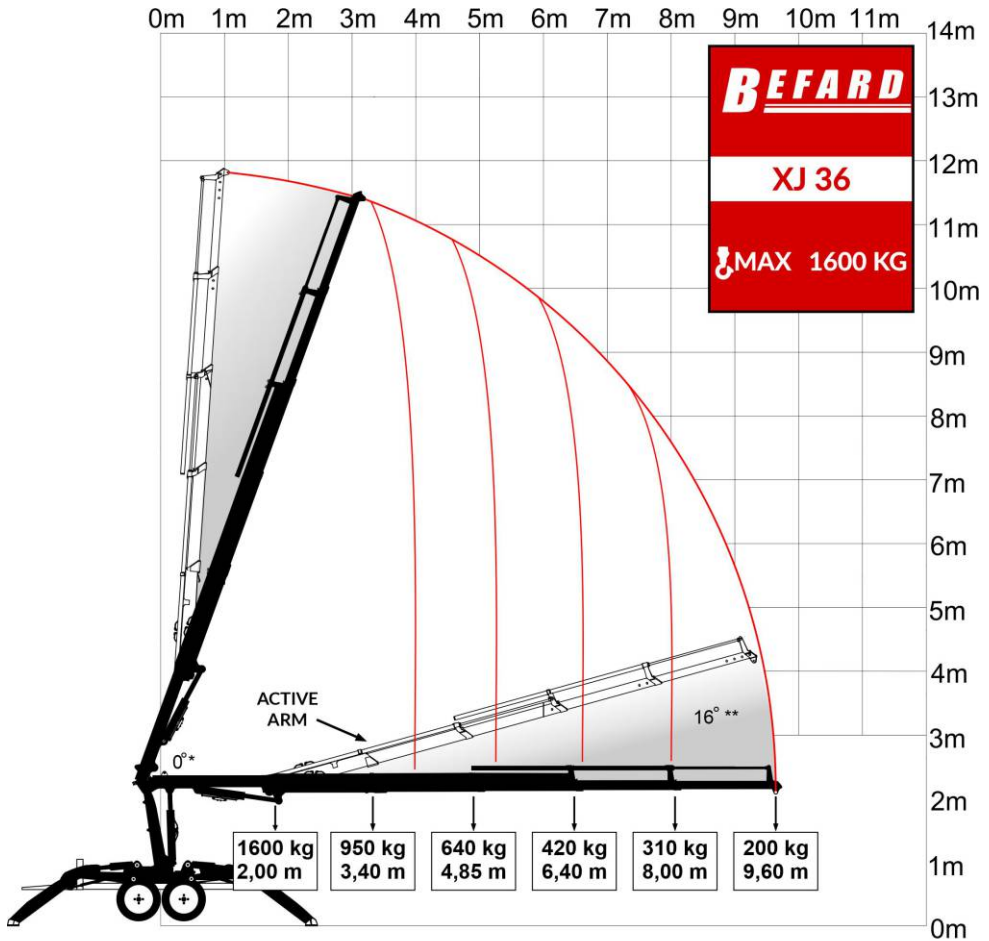
remote control



The dimensions of the trailer may differ from those given in the catalog.

# BEFARD XJ TRAILER CRANE

## CRANE ON A TRAILER XJ 36



\* The possibility of working with both arms fully extended

\*\* An active arm with linkage on crane articulations, allowing for an additional break up to 16th rise

# BEFARD XJ TRAILER CRANE

## CRANE ON A TRAILER XJ 55

### CRANE PARAMETERS XJ 55

- registered for full capacity,
- maximum capacity 2400 kg,
- four hydraulic extensions and one manual with a total horizontal reach of 11.2 m and 13.3 m vertically,
- column rotation
- extension equipped with textolite slides,
- internal combustion engine - VANGUARD engine (electric start),
- radio control of the crane,
- active arm
- a vehicle of category O2,
- number of axles and wheels 2/4
- length 4400 mm
- width 2020 mm
- four supports lowered hydraulically, after initial unfolding by hand



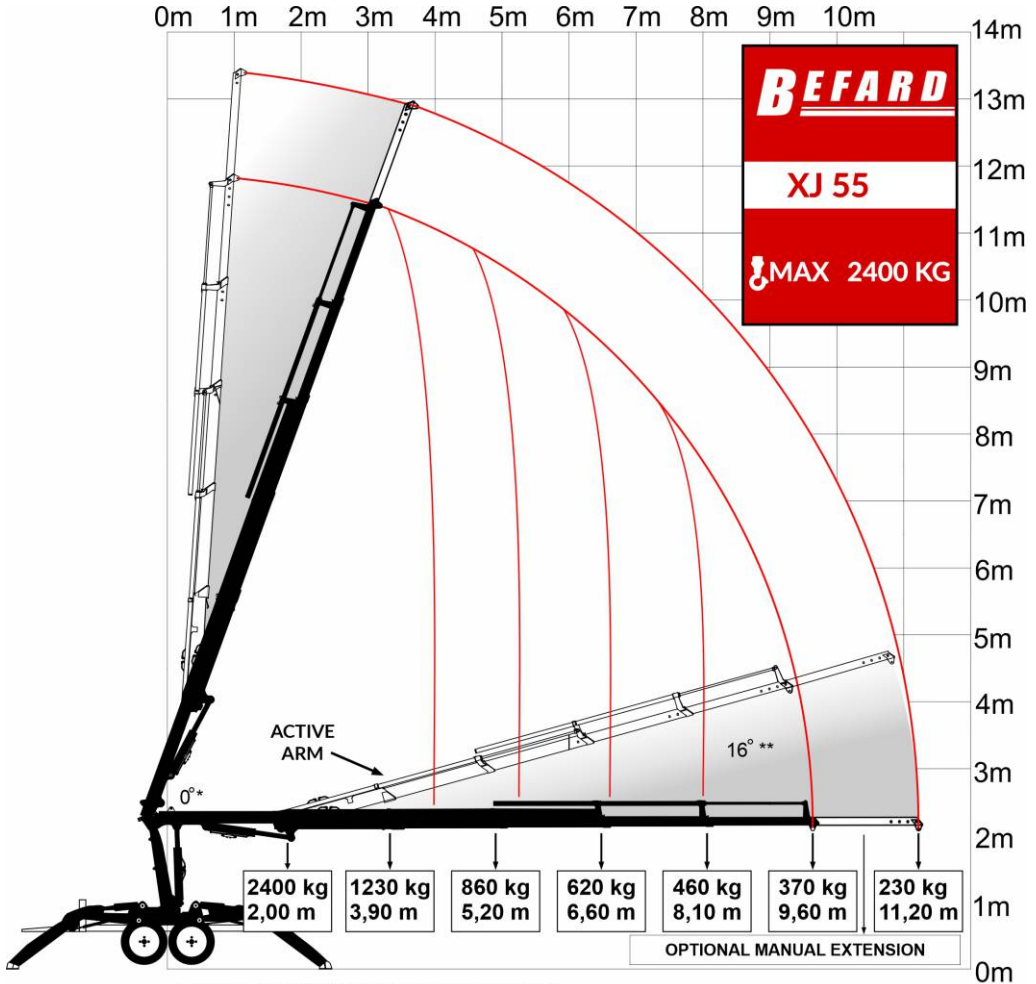
remote control



The dimensions of the trailer may differ from those given in the catalog.

## BEFARD XJ TRAILER CRANE

### CRANE ON A TRAILER XJ 55



\* The possibility of working with both arms fully extended

\*\* An active arm with linkage on crane articulations, allowing for an additional break up to 16th rise



# BEFARD XJ TRAILER CRANE

## CRANE ON A TRAILER XJ 57

### CRANE PARAMETERS XJ 57

- registered for full capacity,
- maximum capacity 3200 kg,
- three hydraulic extensions and one manual with a total horizontal reach of 6.75 m and almost 9 m vertically,
- column rotation
- extension equipped with textolite slides,
- internal combustion engine - VANGUARD engine (electric start),
- radio control of the crane,
- active arm
- a vehicle of category O2,
- number of axles and wheels 2/4
- length 4400 mm
- width 2020 mm
- four supports lowered hydraulically, after initial unfolding by hand



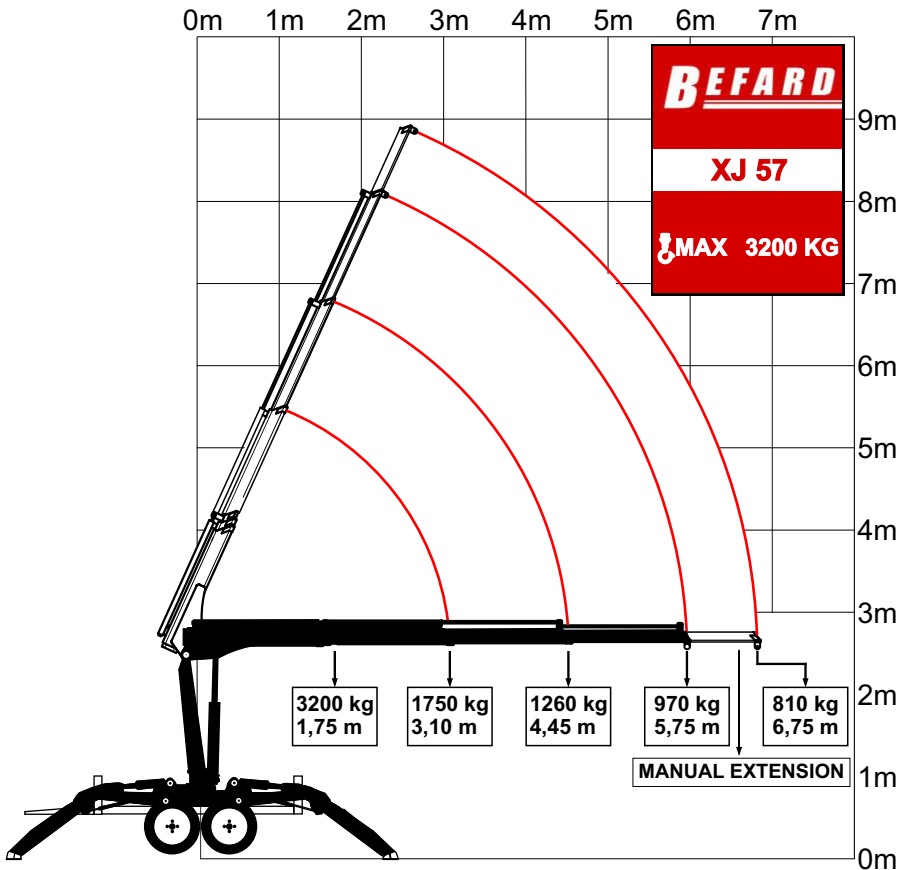
remote control



The dimensions of the trailer may differ from those given in the catalog.

# BEFARD XJ TRAILER CRANE

## CRANE ON A TRAILER XJ 57



# BEFARD XJ TRAILER CRANE

## CRANE ON A TRAILER XJ 95

### CRANE PARAMETERS XJ 95

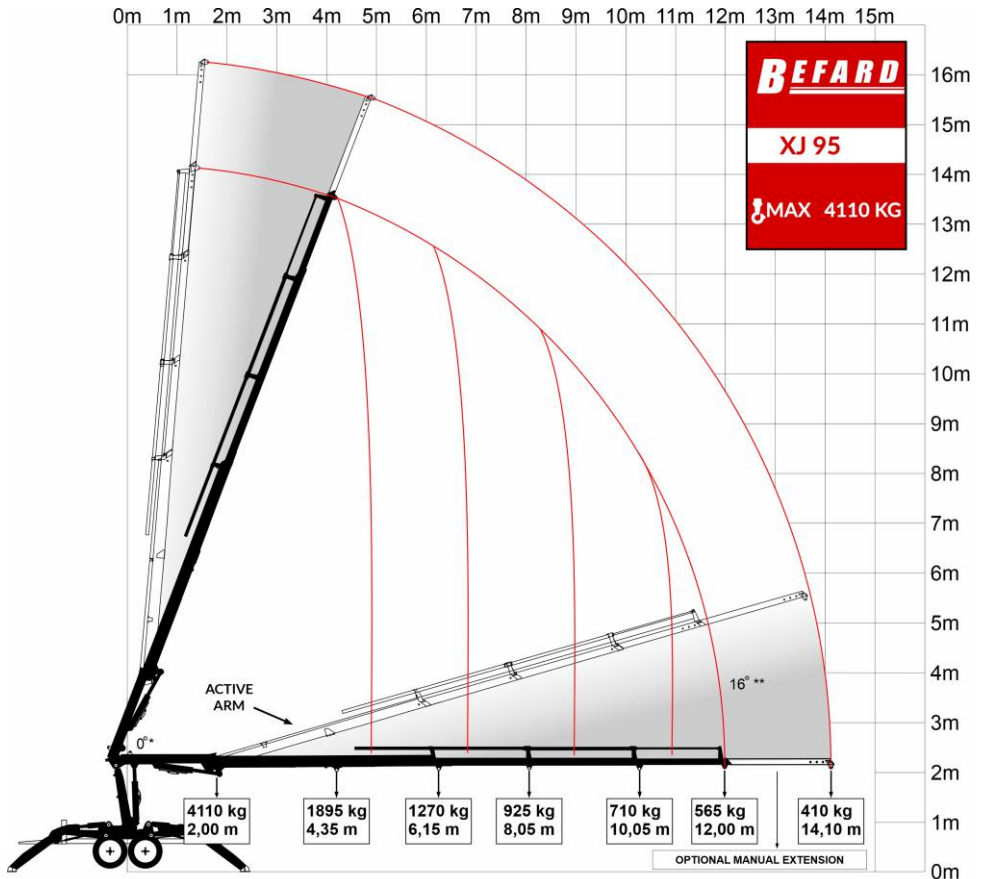
- registered for full capacity,
- maximum capacity 4110 kg,
- four hydraulic extensions + one manual with a total reach of 14.1 m. horizontally and almost 16.4 m vertically
- column rotation
- extension equipped with textolite slides,
- internal combustion engine
- radio control of the crane,
- a vehicle of category O2,
- number of axles and wheels 2/4
- length 4400 mm
- width 2020 mm
- four supports lowered hydraulically, after initial unfolding by hand



The dimensions of the trailer may differ from those given in the catalog.

# BEFARD XJ TRAILER CRANE

## CRANE ON A TRAILER XJ 95



\* The possibility of working with both arms fully extended

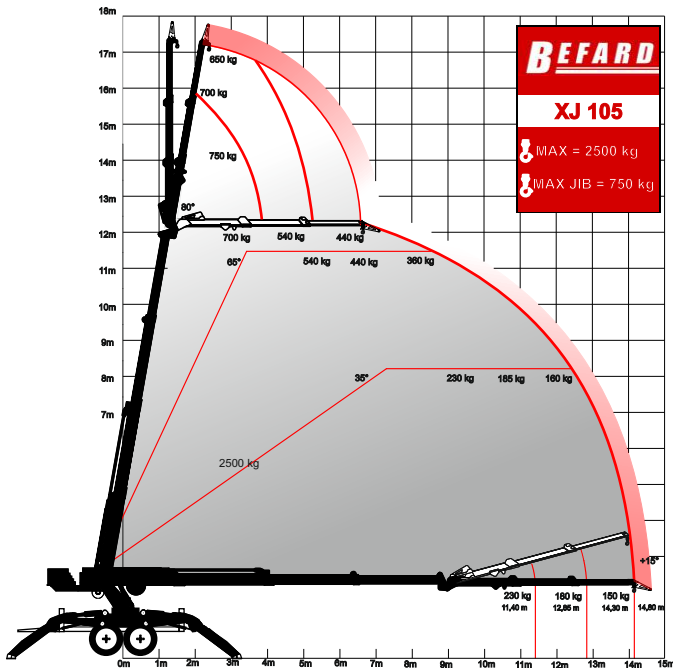
\*\* An active arm with linkage on crane articulations, allowing for an additional break up to 16th rise

## BEFARD XJ TRAILER CRANE

### CRANE ON A TRAILER XJ 105

#### CRANE PARAMETERS XJ 105

- registered for full capacity,
- maximum capacity 2500 kg,
- maximum range with JIB and a rummaging hook at the level of 14.80 m. and approx. 18.00 m vertically,
- extension equipped with textolite slides,
- internal combustion or Li-ion batteries,
- radio control of the crane,
- a vehicle of category O2,
- number of axles and wheels 2/4
- four supports lowered hydraulically, after initial unfolding by hand



Maksymalne obciążenie haka szperającego JIB'a wynosi 500 kg. Używając haka szperającego należy stosować się do powyższego diagramu użytkw. The maximum load of a search-hook is 500 kg. When using the search-hook, the above load capacity diagram should be followed.



remote control

The dimensions of the trailer may differ from those given in the catalog.